

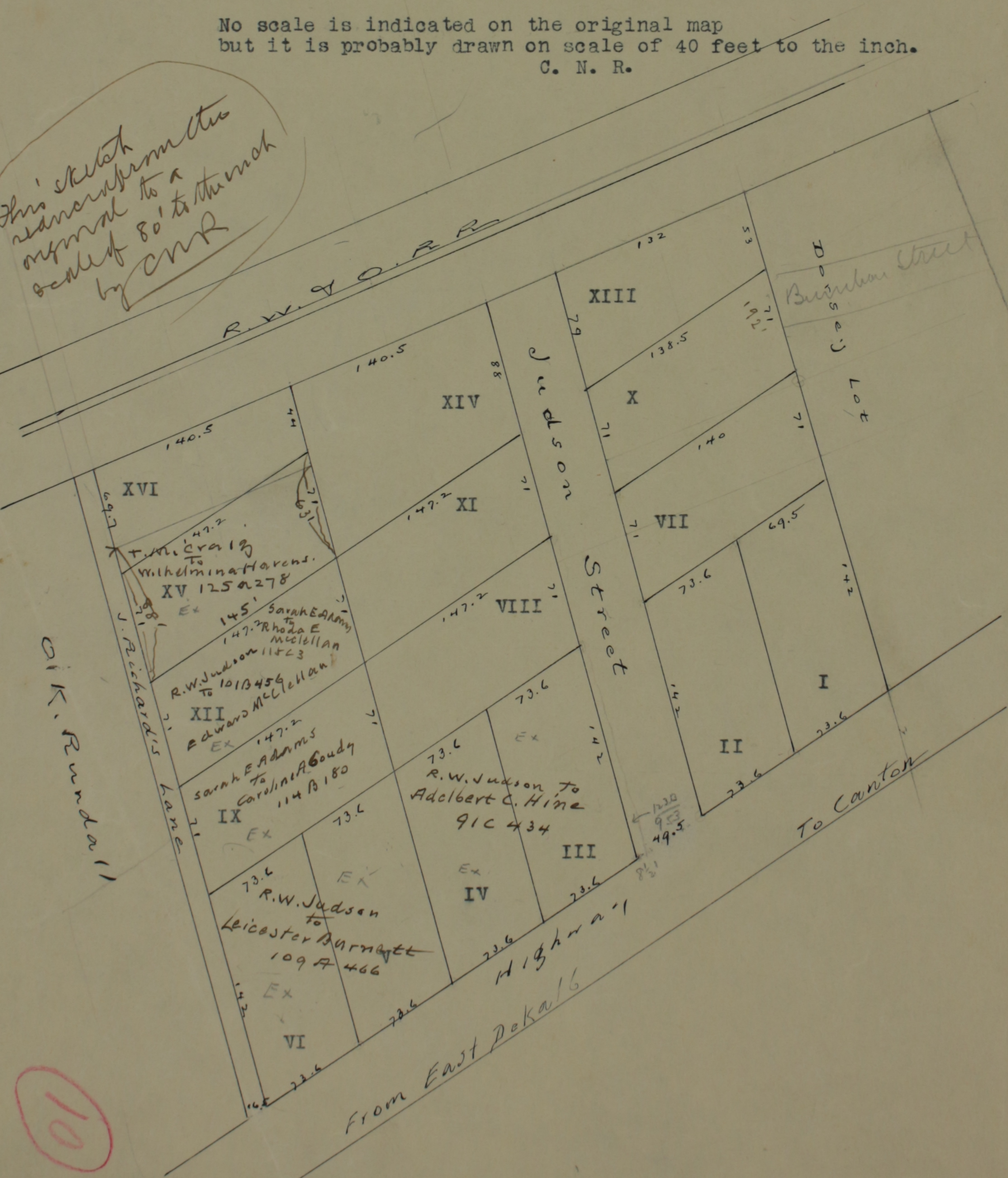
This sketch drawn on a scale of 80 feet to the inch  
 being reduced from a map filed  
 in St. Lawrence County Clerk's office  
 October 31, 1877, entitled :-

"Map of Village Lots at Dekalb Junction  
 laid out on lands of Gen. R. W. Judson  
 as surveyed by H. Thompson June 3d 1867 "

*2 maps 82*

No scale is indicated on the original map  
 but it is probably drawn on scale of 40 feet to the inch.  
 C. N. R.

*This sketch  
 reworked from the  
 original to a  
 scale of 80' to the inch  
 by C.N.R.*



*O.K. Rundall*

*10*